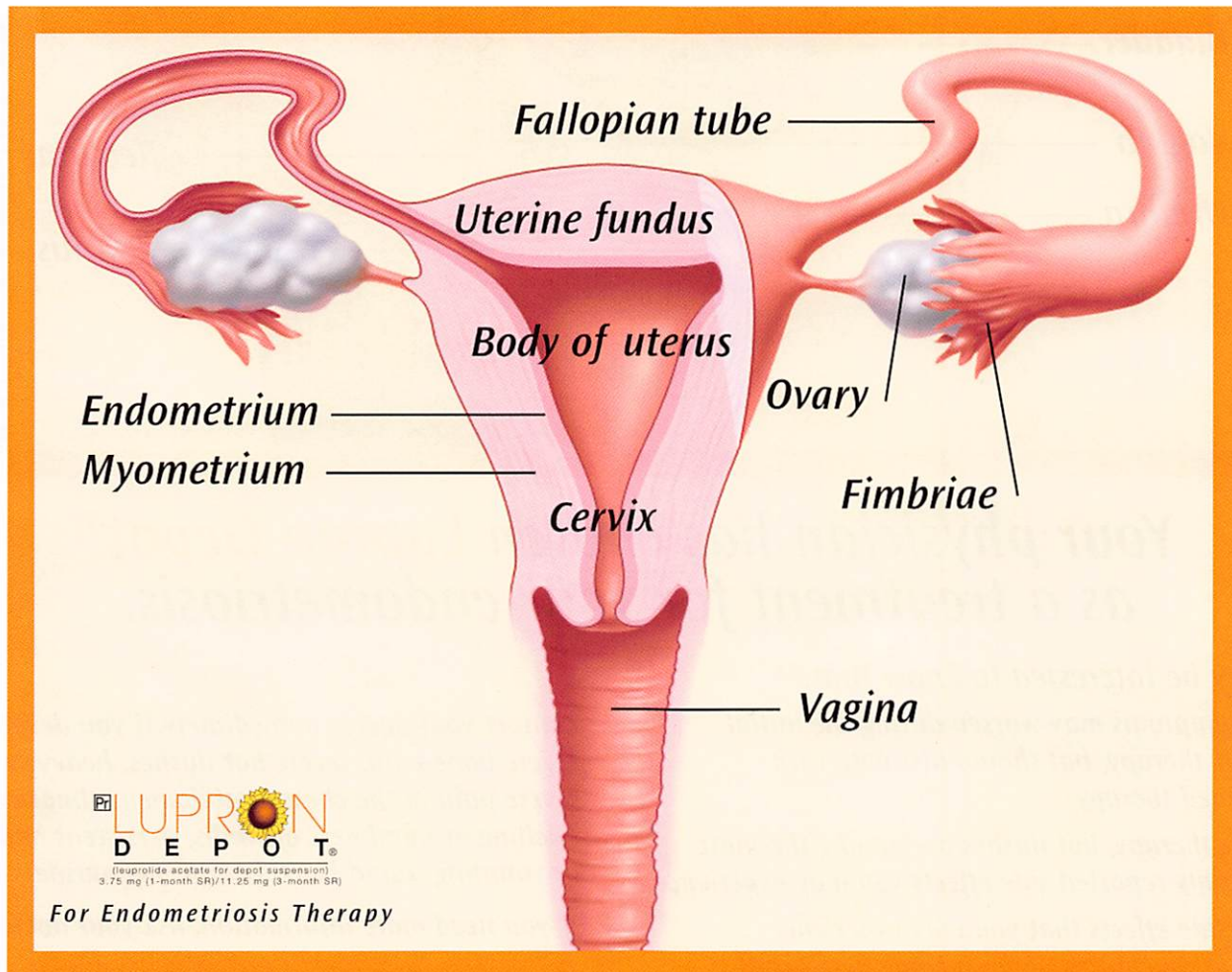


# Helping to calm the storm in endometriosis

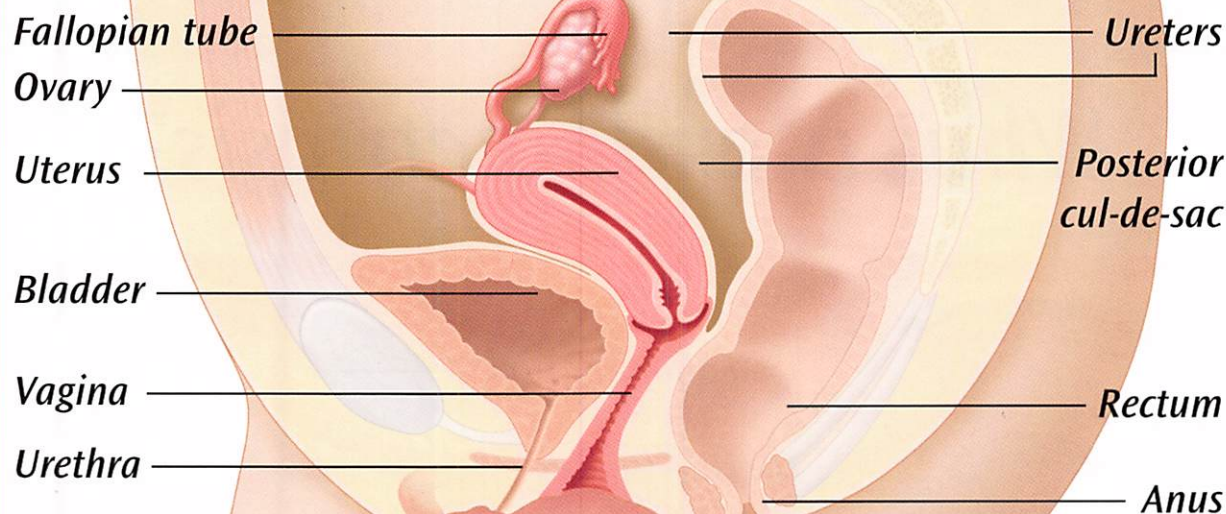
## What is endometriosis?



*It is misplaced endometrial tissue which is found outside the uterus.<sup>3</sup>*

### *Endometriosis:*

- 1. Can affect any woman who is menstruating.<sup>3</sup>*
- 2. Most frequent symptoms are pelvic pain, painful menstruation, pain during sexual activity, infertility, and heavy or irregular bleeding.<sup>3</sup>*
- 3. In a study of 141 patients, endometriosis was the most common cause of chronic pelvic pain.<sup>4</sup>*



## Your physician has chosen **Lupron Depot**<sup>®</sup> as a treatment for your endometriosis.

You may be interested to know that:<sup>5,6</sup>

1. Your symptoms may worsen during the initial days of therapy, but should dissipate with continued therapy.
2. During therapy, hot flushes are among the most commonly reported side effects you may experience.
3. Other side effects that you may experience while using **Lupron Depot** include headaches, vaginitis and emotional lability.
4. You should use a non-hormonal form of birth control, such as condoms, while on **Lupron Depot**.
5. Your period should return to normal within 2-3 months after the final month of treatment.
6. Contact your doctor immediately if you develop: severe bone pain, severe hot flushes, heavy sweating, severe pain in the chest or abdomen, abnormal swelling or numbness of limbs, persistent nausea or vomiting, rapid heart beat or nervousness.
7. If you need more information, ask your doctor.

Both **Lupron Depot** (leuprolide acetate for depot suspension) 3.75 mg (1-month SR) and 11.25 mg (3-month SR) are indicated in the treatment of endometriosis, including pain relief and reduction of endometriosis lesions, for a period of six months. **Lupron Depot** can be used as sole therapy where it may provide symptomatic relief for women close to menopause who do not desire surgery, or as an adjunct to surgery. Experience with **Lupron Depot** for the management of endometriosis has been limited to women 18 years of age and older.

### References:

1. Netter FH. The reproductive system. *The Ciba Collection of Medical Illustrations*, 1977:2.
2. Clemente CD. *Anatomy*. Baltimore: Urban & Schwarzenberg, 1987.
3. Mayo Clinic web site. ([www.mayoclinic.com](http://www.mayoclinic.com))
4. Carter JE. Combined hysteroscopic and laparoscopic findings in patients with chronic pelvic pain. *J. Am Assoc Gynecol Laparosc*, 1994;2:43-7.
5. **Lupron Depot**<sup>®</sup> 3.75 mg (1-month SR) and 11.25 mg (3-month SR) Product Monograph, Abbott Laboratories, Limited.
6. AHFS Drug Information, 2002:106.

**Pr LUPRON**  
**DEPOT**<sup>®</sup>  
(leuprolide acetate for depot suspension)  
3.75 mg (1-month SR)/11.25 mg (3-month SR)

For Endometriosis Therapy

[www.abbott.ca](http://www.abbott.ca)  
1 800 361-7852

**PHARMACEUTICAL PRODUCTS DIVISION**  
**ABBOTT LABORATORIES, LIMITED**  
SAINT-LAURENT, QUÉBEC H4S 1Z1

PAAB  
MEMBER  
R&D

©Abbott Laboratories, Limited  
Printed in Canada  
LUG/21A01-January 2003